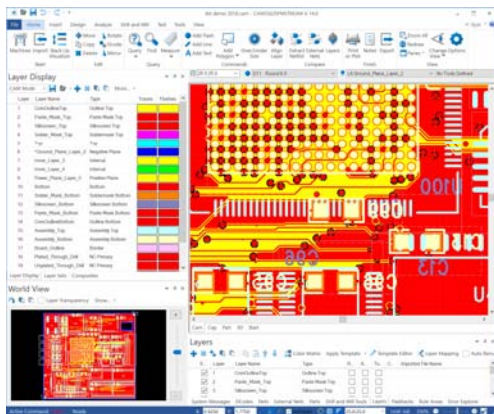


# CAM350<sup>®</sup>

## Uncompromised PCB Design Processing and Analysis

Before they are transitioned to the PCB fabricator, today's complex PCB designs require comprehensive verification to ensure a successful and timely fabrication process. Errors discovered during fabrication pre-processing can drastically impact product schedules and result in costly design re-spins. Fabricators can make modifications to your design data to minimize delays, but the changes may compromise the design's integrity and intent. Inspecting, preparing and validating the PCB design prior to releasing to manufacturing will result in a significant increase in efficiency. It reduces the risk of design re-spins, and most importantly, ensures successful electronic products are built faster at less cost. CAM350 offers a complete suite of tools to import your design data, modify the data if necessary and finally analyze the design for potential fabrication and assembly errors. From design through fabrication, CAM350 streamlines the transition of engineering data into successful, physical PCBs.



CAM350 offers a robust CAM editing environment

## CAM350-620

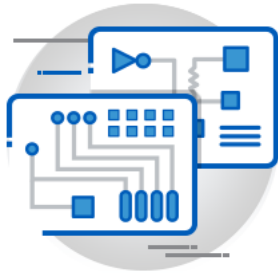
CAM350-620 is a superior collection of functionality to import, modify, optimize and analyze your PCB design data to ensure timely, high-quality PCB fabrication.

### Features and Functionality

CAM350 functionality includes:

- Import of common CAM and NC file formats and direct import of PCB designs in popular CAD formats\*\*
- View, query, report or measure almost any construct in the design
- CAM editing to add or modify flashes, pads, polygons, lines, text or and teardrops
- Netlist compare and export to IPC-D-356 and other formats
- Convert draws to flashes, drawn polygons to rasterized polygons
- Remove redundant data and clip silkscreen ink away from pads
- NC editing to add or modify milling, mill tabs and drills
- Custom aperture editing to create custom pad shapes or custom polygonal areas
- Crossprobing with PCB CAD systems to visualize design content in CAM350 with its native PCB design file
- 3D viewing for enhanced visualization of design data
- PCB Stackup design with user defined materials table and modeling in 3D
- Optional 3D PDF printing for sharing fully modeled PCB data
- Design for Manufacturing (DFM) analysis to analyze your design for potential flaws that may lead to fabrication delays
- Part editing to create custom footprints (or parts) required for reverse engineering Gerber into intelligent CAD data
- Panel editor to design custom fabrication panels with mixed board images, test coupons, vent patterns, pinning holes and fiducials
- Export functions to package your completed design in standard manufacturing formats including Gerber, ODB++, IPC-2581, NC Drill and Mill and other formats
- Create and replay application macro files to perform repetitive operations with minimal user interaction
- Design analysis and custom reporting to facilitate communication of design statistics to your PCB fabricator for more accurate quotes

\*\*PCB CAD data import available for an additional purchase



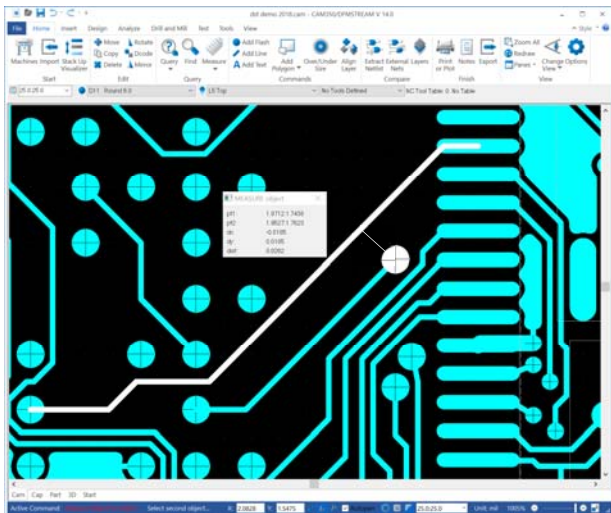
# CAM350<sup>®</sup>

## Core Features and Functionality

Successful compilation of PCB design data into usable PCB manufacturing data is critical to minimize delays in delivering new electronic products to market. CAM350 offers all the functionality you need to ensure high quality outputs to manufacturing that result in higher manufacturing yields and shorter time to market.

### Import Data from Multiple Sources

Import CAM and NC data in industry standard file formats including ODB++, IPC-2581, Gerber, Excellon, Sieb & Meyer, DXF or HPGL. Input data directly from Mentor Graphics via PADS ASCII or GenCAD\*\*.



Use the measuring tool to query distance between objects

### View, Query, Measure and Report

Filter your view of the design data by layer, Dcode, net, part, drill or mill tool. Query any element to get pertinent details such as size, shape, area, Dcode, design layer, drill tool, and so on. Get details specific to each type of element. Measure the distance from point to point or object to object. Get reports on Dcodes, a Bill of Materials (BOM), Netlist or Centroid data. Attach custom notes to your design data for future reference.

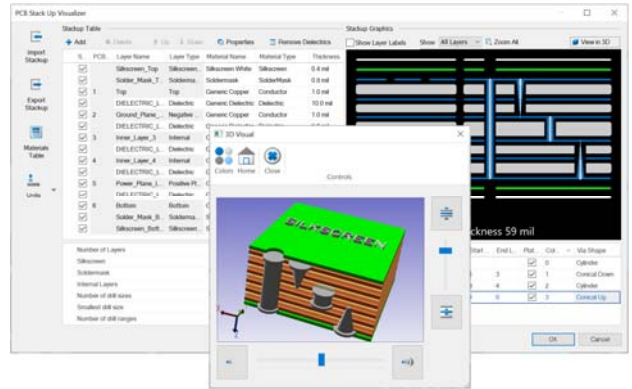
### NC Editing

Use NC Editing features to import or export NC drill and mill data. Add drills, slots, mill paths and mill tabs for panel separation. Modify drill and mill tool definitions. Create custom NC drill files for specific drilling operations. Convert gerber content to NC content and NC to Gerber.

\*\*Available for an additional purchase

## Data Conversion and Optimization

Convert draws to flashes, drawn polygons to rasterized polygons, polygons to board outlines and other conversions. Optimize your design data by removing isolated or redundant pads or remove pads covered by copper. Add teardrops, oversize pads for a solder mask or undersize pads for a paste mask. Remove silkscreen ink from pads.



## PCB Stackup Design and Visualization

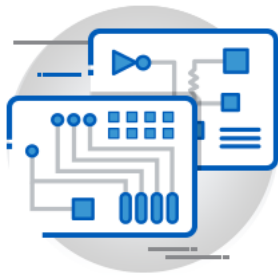
Use Stackup Visualizer to design, view or modify a PCB stack up in multiple visualization modes including tabular, cross section and 3D. Drag and drop layers to interactively change layer order. Assign construction materials and set attributes such as layer thickness or dielectric constant. Interactively define and view via drill spans and via technologies including back-drills. Use export and import functions to exchange stack up design details with a manufacturer and update the stackup with material or other changes from the manufacturer.

## CAM Editing

Use editing commands to cut, copy, paste, move, rotate or mirror any element. Add flashes, draws, lines, polygons, and many other design elements. Remove or re-order layers. Change attributes, reference designators, text, via or pad properties, Dcodes, text font or style. Add design elements such as vias, wires, parts, or board outline. These are just a sample of the features available to edit your design data.

## Custom Aperture Editing

Create custom apertures for use in your design. Custom apertures are effectively shapes that include both positive (additive) and negative (subtractive) data. Create custom thermals, pads shapes or polygonal areas and add them to your design.



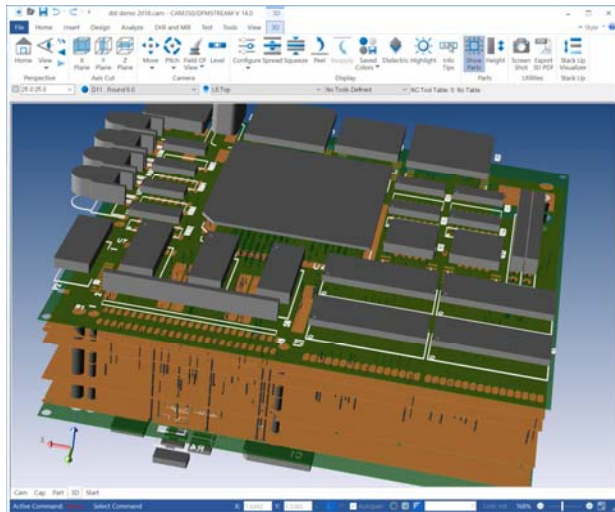
# CAM350<sup>®</sup>

## PCB CAD Crossprobing

Crossprobing facilitates visualization of CAM350 design data to its source PCB Design in its native PCB tool. Select elements in the PCB design tool and the equivalent element is selected in CAM350. After a CAM350 DFM Analysis, use crossprobing to visit error locations in the PCB tool to make corrections. This expedites the process of finding and correcting errors in the source PCB design. CAM350's crossprobing is compatible with leading PCB CAD tools such as Mentor Graphics' PADS or Xpedition; Cadence Allegro or OrCAD PCB Designer.

## Design Analyzer

Use Design Analyzer to correlate PCB features such as trace width/spacing, number of layers, board size, and drill/via technologies to the capabilities of one or many preferred PCB fabricators. This guarantees submitted designs will be fabricated without hidden costs or unexpected delays. Send a Design Analyzer design report to a PCB fabricator to arrive at cost and delivery estimates for the fabricated PCB. Working collaboratively with the report in hand, PCB fabricators can make recommendations for design changes that may significantly reduce cost and fabrication time.



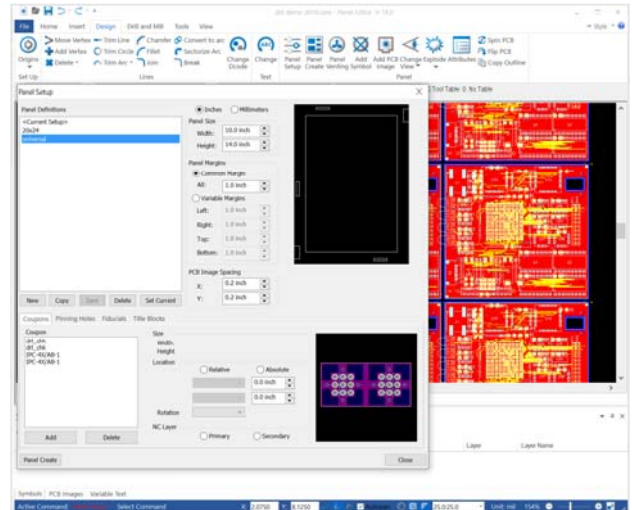
Use 3D Visualization to view a virtual model of a PCB

## 3D Visualization

3D manufacturing data visualization provides a virtual model of the PCB to predict how a designers manufacturing data will be integrated and constructed into a finished PCB. The use of 3D provides a more robust environment to interrogate PCB manufacturing data as users can explore what the finished PCB will look like at any angle including between layers when compared to traditional 2D technology.

## Application Macros

Using a text editor and some BASIC programming knowledge, create a macro file to perform repetitive operations. Create forms that interact with CAM350. Perform database queries. Launch and interact with external applications.



Use Panel Editor to create custom PCB panels

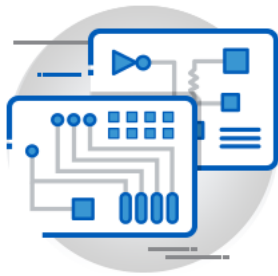
## PCB Panel Design

Create a multi-PCB image panel quickly using the panel design features. Choose the automated panel wizard, enter a few basic parameters, and the panel layout with minimal material waste is designed for you. Use the design merge features and create custom panels with images from different PCB designs. Create panels with test coupons, pinning holes, fiducials, robber bars, negative venting, and other panel constructs. The original one up image of the PCB design is preserved separately from the panel design. Add mill paths, mill tabs to create a custom routing design for the panel. Export the completed panel design to Gerber, DXF, Mill and Drill, IPC-2581 or ODB++.

## Netlist Compare

Use the Netlist compare features to verify the integrity of design data extracted from the PCB CAD tool. Generate a CAM netlist derived from parsing the data in CAM350 and compare it to an IPC-D-356 netlist exported from the source PCB CAD tool. This comparison ensures the design data was not compromised by the PCB CAD data extraction process.





# CAM350<sup>®</sup>

## Part Editing

Use part editing features to modify or manage part definitions created during CAD data import. Part definitions are most useful when reverse engineering design data from unintelligent sources such as Gerber, into a more CAD compliant database with part definitions, padstacks, nets, vias and so on.

## Export to Multiple Formats

Design data can be exported to industry standard file formats including ODB++, IPC-2581, Gerber, DXF, Excellon, Sieb & Meyer or HPGL. Additionally, export to Mentor Graphics PADS ASCII or GenCAD\*\*.

## Print to 3D PDF

Users can export a 3D PCB model into standard Adobe 3D PDF. Once exported, the 3D document can be shared with design team members or manufacturers for feedback. Adobe PDF viewers offer the ability to interact with the 3D PCB model through camera changes, pan and zoom, and navigating the model hierarchy\*\*.

## Worldwide Sales, Technical Support and Training

All DownStream Technologies products are sold and supported by a worldwide network of channel partners. For sales, technical support, or training, contact your local channel partner or visit:

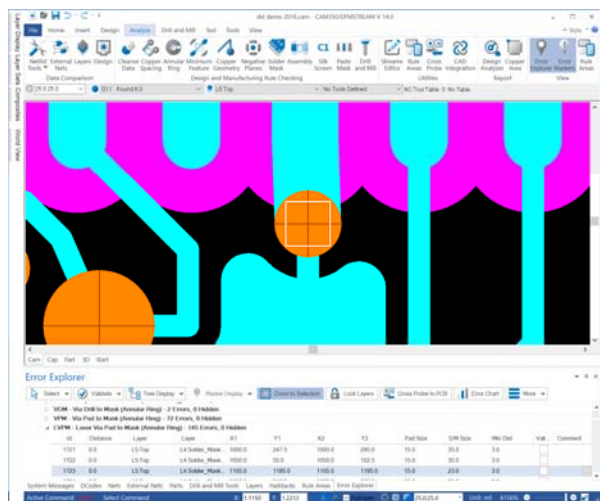
[www.downstreamtech.com/worldwide-distribution.php](http://www.downstreamtech.com/worldwide-distribution.php)

### DownStream Technologies, LLC

290 Donald Lynch Blvd  
Suite 301  
Marlborough, MA 01752  
(+1) 508 970-0670

[sales@downstreamtech.com](mailto:sales@downstreamtech.com)

[www.downstreamtech.com](http://www.downstreamtech.com)



*Use DFM Analysis to locate laser via related errors*

## DFM Analysis

Analyze your design for critical design flaws that commonly lead to fabrication and assembly delays. Perform basic analysis for acid traps, copper slivers, mask slivers, solder bridging, antennas, pin holes, thermal relief errors and other basic checks. Perform advanced analysis on intelligent design data to include plated or unplated holes, copper, blind and buried vias, back drills, more mask analysis, and a multitude of other analysis.

\*\*Available for an additional purchase

Revised 01/03/2020