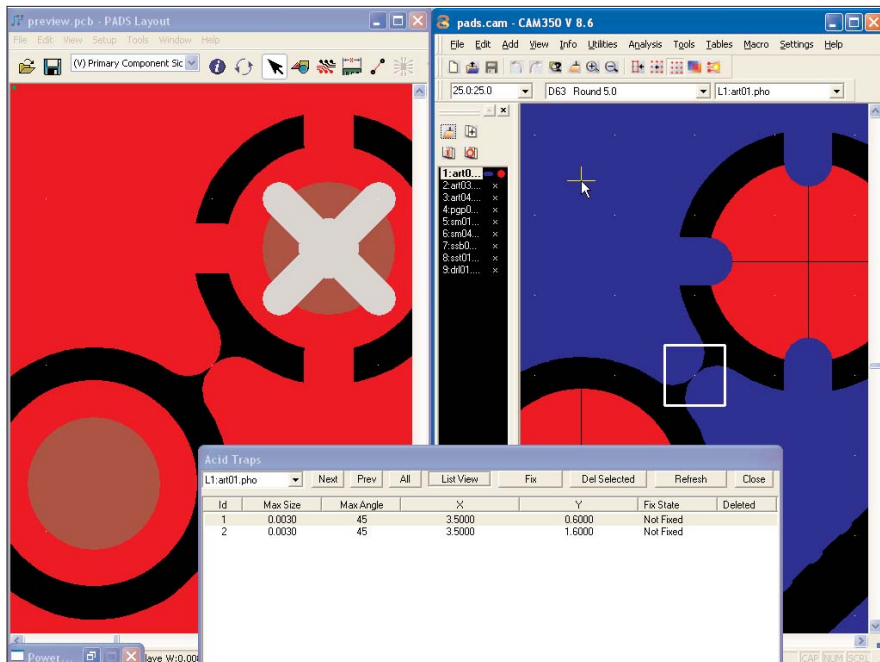


# Crossprobing for PADS Layout



Crossprobing functionality announced with CAM350 Release 8.6 closes the gap between engineering and manufacturing by helping PCB designers quickly locate potential discrepancies between design intent (CAD data) and manufacturing outputs (Gerber data).

## Crossprobing for PADS Layout

CAM350 now features Crossprobing to Mentor's PADS Layout (PowerPCB) design solution. With this functionality design errors can be highlighted in CAM350 and its location will also be shown in PADS Layout, allowing the designer to quickly and easily correct the problem. CAM350 can also be used to view intelligent data within PADS Layout (components, pins, nets) while at the same time, viewing the corresponding locations as Gerber data in CAM350. Key features include:

- Bi-directional zoom/view window location between CAM350 and PADS Layout
- Window/View synchronization
- Automatic layer displaying and synchronization
- Bi-directional selection of components, pins and nets
- DRC/DFF error identification from CAM350 is identified in PADS Layout
- Crossprobing between intelligent CAD file and unintelligent Gerber data

